



GOOD MORNING
Have Good Trading Day

WEDNESDAY



Price is what you pay.
Value is what you get.

- Warren Buffet



MARKET PULSE

INDIAN INDICES

NAME	CMP	NET CH.	%
SENSEX	26697	+182	+0.69
NIFTY	8221	+51	+0.62

INDIAN ADR'S

SYMBOL	CLOSE	GAIN/ LOSS %
DRREDDY	46.74	+0.78
HDFCBANK	63.64	+0.54
ICICIBK	7.85	-0.13
INFY	14.97	+1.84
TATAMOTOR	34.60	-1.26
WIPRO	9.62	+2.89

FII AND MF ACTIVITY

SYMBOL	In Crs.
FIIs Eq (Provisional)	-2181.03
FIIs Index Future	235.68
FIIs Index Options	-134.70
FIIs Stock Future	-477.43
FIIs Stock Options	-76.26
DIIs Eq (Provisional)	178.92

CURRENCY

RBI RATE	13-DEC-2016
RUPEE - \$	67.4867
EURO	71.7654
YEN 100	58.5400
GBP	85.5461

MARKET PULSE

GLOBAL INDICES

NAME	CMP	NET CH.	%
DOW	19911	+114	+0.58
NASDAQ	5463	+51	+0.95
NIKKEI	19257	+6	-0.03
HANG SENG	22511	+54	+0.29
SGX NIFTY	8215	-1	-0.01

WORLD COMMODITIES

FUTURE	US\$	CHANGES
CRUDE	52.34	-0.64
NATURAL GAS	3.479	+0.005
GOLD	1162.10	+3.1
SILVER	17.005	+0.028
COPPER	2.5900	-0.0085

WORLD EVENTS

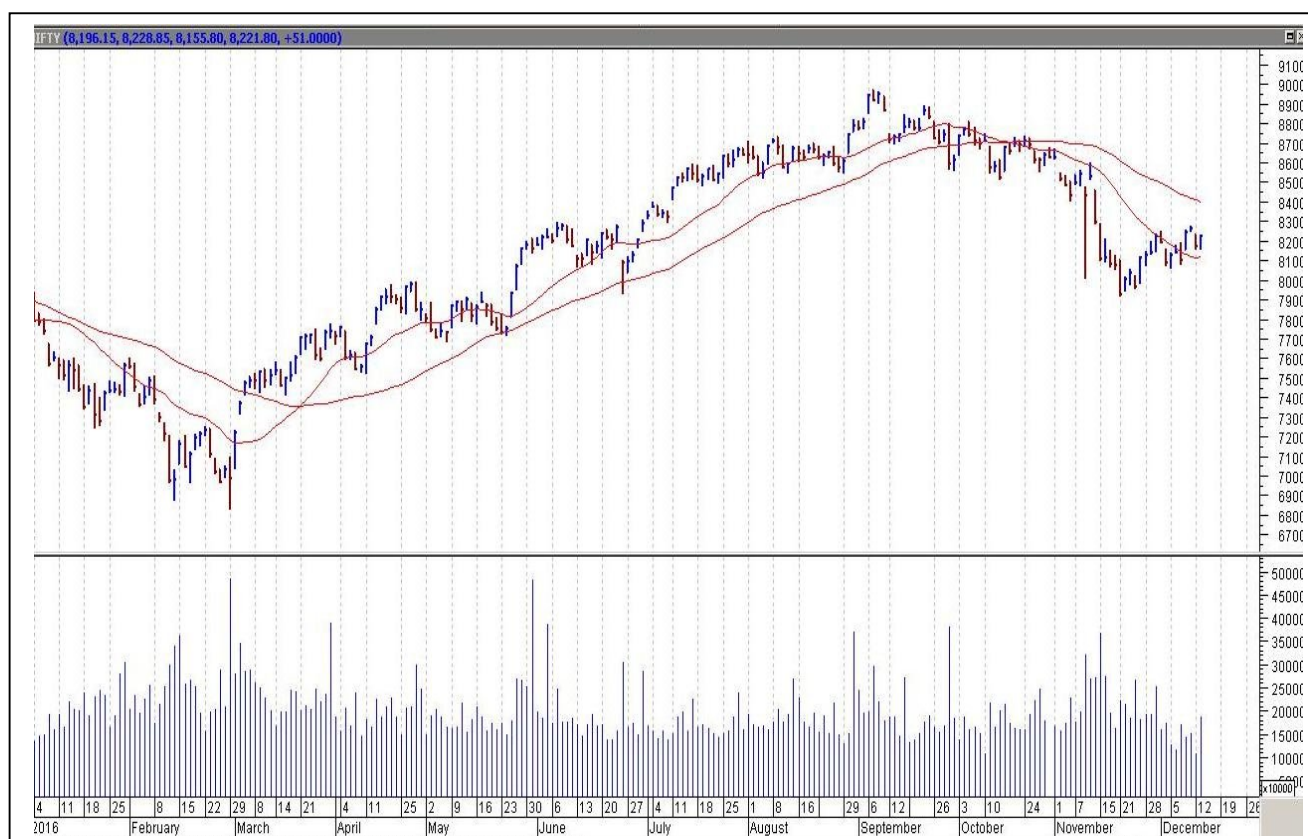
- US: Core Retail Sales m/m
- PPI m/m
- Retail Sales m/m
- Crude Oil Inventories
- UK: Average Earnings Index 3m/y
- Claimant Count Change
- BOE Gov Carney Speaks

TOP STORY

- Adani Ports - Indian Port Rail Corporation to start work on 4300 cr rail project connecting Dhamra port to coalfield at Talcher
- DLF may split 40% stake sale in Arm between GIC & blackstone
- Govt asks Axis Bank to put its house on order KRBL has set up Furfuryl Alcohol plant for Rs7cr
- Jindal Steel & Power gets commercial date of operation for last unit at Tamnar wef 12 Dec 2016
- Wockhardt - Daman unit compliant with principles & guidelines of good manufacturing as per UK MHRA
- Asian Oilfield gets Lol from Oil India worth Rs63.75cr
- Scanpoint Geomatics gets order worth Rs95.47cr from govt. of Rajasthan
- Bajaj Electricals enters into strategic alliance with UK based Gooee for IoT based lighting solutions
- Coal India Q2 Cons Net Profit At Rs.600.4 Cr Vs Rs.2654 cr (YOY). Cons Total Income At Rs.25759 Cr Vs Rs 23821 Cr (YOY)



NIFTY CHART



MARKET COMMENTARY

Indian equity benchmarks traded on a firm note throughout the session and ended in green ahead of inflation data and FOMC policy outcome. The Fed is widely expected to raise interest rates by a quarter percentage point, its first for this year, when it announces its decision on Wednesday. Such an outcome could hit Indian shares given that markets are already under pressure over worries that demonetization would hurt the economy bigger than expected. The market traded slightly in green in early deals on fresh buying by domestic investors. For today's trade Nifty likely to trade in the range between 8235 – 8245 in the upper side and 8215 – 8195 in the lower side.

MARKET LEVELS

	CMP	SUPPORT LEVELS				RESISTANCE LEVELS			
NIFTY	8221	8215	8195	8185	8175	8235	8245	8255	8265
USDINR	67.57	67.5	67.4	67.3	67.2	67.65	67.75	67.8	67.9



BULK DEALS (BSE)

SCRIP	CLIENT NAME	BUY/SELL	QUANTITY	PRICE
MANDHANA	OLUMPUS TRADING AND ADVISORY LLP	S	190,000	30.7
AVL	GUINNESS SECURITIES LIMITED	B	288,000	15.34

BULK DEALS (NSE)

SCRIP	CLIENT NAME	BUY/SELL	QUANTITY	PRICE
DHAMPURSUG	HSBC GLOBAL INVESTMENT FUNDS-ASIA EX JAPAN EQUITY SMALLER CO	BUY	1444791	115.4
DHAMPURSUG	J P M S L A/C COPTHALL MAURITIUS INVESTMENT LTD	SELL	1444791	115.4
ESCORTS	HSBC GLOBAL INVESTMENT FUNDS-ASIA EX JAPAN EQUITY SMALLER CO	BUY	1345855	321.6
ESCORTS	J P M S L A/C COPTHALL MAURITIUS INVESTMENT LTD	SELL	1345855	321.6
TATAMOTORS	TATA SONS LIMITED	BUY	50000000	486.13

SCRIP'S IN F&O BAN

(To resume for normal trading below 80% of market wide limit required)

IBREALEST, JINDALSTEL

Initial Public Offering (IPO)

Company Name	Security type	Issue Start Date	Issue End Date	Status
Laurus Labs Ltd	Equity	06-Dec-2016	08-Dec-2016	Closed



NIFTY 50 STOCKS: SUPPORT & RESISTANCE						
Symbol	Close	Support 1	Support 2	Pivot Point	Resistance1	Resistance2
ACC	1340	1329	1318	1339	1350	1361
ADANI PORTS	286	281	275	284	289	293
AMBUJACEM	206	205	203	207	209	211
ASIANPAINT	907	896	886	906	916	926
AXISBANK	453	445	438	450	458	462
BAJAJ-AUTO	2659	2644	2629	2655	2670	2681
BANKBARODA	160	158	155	159	162	164
BHARTIARTL	330	327	324	329	332	334
BHEL	125	125	124	126	127	128
BOSCH LTD	20917	20579	20241	20789	21127	21338
BPCL	629	615	602	623	637	645
CAIRN	262	260	257	263	266	270
CIPLA	579	573	566	577	583	588
COALINDIA	306	303	301	306	308	310
DRREDDY	3167	3148	3128	3164	3183	3199
GAIL	425	421	417	425	429	434
GRASIM	851	841	831	852	862	873
HCLTECH	801	793	786	799	806	811
HDFC	1279	1259	1239	1270	1290	1302
HDFCBANK	1186	1180	1173	1185	1192	1197
HEROMOTOCO	3211	3194	3178	3217	3233	3256
HINDALCO	177	174	171	178	181	186
HINDUNILVR	831	825	819	831	837	842
ICICIBANK	264	263	261	264	266	267
IDEA	77	76	75	77	78	78
INDUSINDBK	1090	1079	1069	1087	1097	1105
INFY	990	977	963	985	998	1006
ITC	236	233	230	235	238	240
KOTAKBANK	731	723	715	731	739	746
LT	1376	1368	1360	1373	1381	1387
LUPIN	1494	1477	1461	1493	1510	1526
M&M	1167	1156	1144	1165	1177	1186
MARUTI	5163	5129	5095	5168	5202	5241
NTPC	165	163	161	165	167	169
ONGC	312	309	306	312	314	317
PNB	129	128	126	130	131	133
POWERGRID	185	183	181	185	187	189
RELIANCE	1040	1031	1023	1036	1045	1050
SBIN	266	263	260	265	268	270
SUNPHARMA	684	672	660	679	691	698
TATAMOTORS	471	460	449	473	484	497
TATAPOWER	78	77	76	77	78	79
TATASTEEL	421	416	411	423	428	434
TCS	2200	2183	2165	2200	2218	2235
TECHM	485	472	460	480	492	500
ULTRACEMCO	3367	3322	3278	3400	3445	3522
VEDL	240	237	234	242	245	249
WIPRO	464	458	452	461	467	470
YESBANK	1207	1188	1169	1199	1218	1229
ZEEL	442	437	433	444	448	455



CORPORATE ACTION / BOARD MEETINGS

NSE Download Ref No. : NSE/CML/33740:-Face Value Split - KNR Constructions Limited from Rs. 10 to Rs. 2 w.e.f. December 13, 2016

NSE Download Ref No : NSE/FAOP/33755:- Adjustment of Futures and Options contracts in the security ONGC. The adjusted strike price shall be arrived at by dividing the old strike price by the adjustment factor i.e. 1.5. The revised market lot would be 3750 w.e.f December 15, 2016

BOARD MEETINGS

COMPANY NAME	DATE	PURPOSE	RS. PER SH.
JINDALSAW	14-Dec-16	Annual General Meeting/Dividend	1
ALANKIT	15-Dec-16	Face value Split From Rs 2 To Re 1	
WSI	15-Dec-16	Annual General Meeting	
BPL	15-Dec-16	Annual General Meeting	
COLPAL	15-Dec-16	Dividend	3
JSL	15-Dec-16	Annual General Meeting	
ONGC	15-Dec-16	Bonus 1: 2	
NAGAROIL	16-Dec-16	Annual General Meeting	
JETAIRWAYS	19-Dec-16	Annual General Meeting	
GILLANDERS	19-Dec-16	Annual General Meeting	
VISASTEEL	19-Dec-16	Annual General Meeting	
VALECHAENG	19-Dec-16	Annual General Meeting	
BGLOBAL	20-Dec-16	Annual General Meeting	
BANARISUG	21-Dec-16	Annual General Meeting/Dividend	7.5
JVLAGRO	21-Dec-16	Annual General Meeting/Dividend	0.1
ORBITCORP	21-Dec-16	Annual General Meeting	
BSLIMITED	22-Dec-16	Annual General Meeting	
PRUDMOULI	22-Dec-16	Annual General Meeting	
ESSDEE	22-Dec-16	Annual General Meeting	
MANDHANA	22-Dec-16	Annual General Meeting	
BALMLAWRIE	26-Dec-16	Bonus 3:1	

NEWS & RUMOURS:

- Gold (Spot Dollar) major support = \$1123/\$1105 & Resistance = \$1194/\$1222.
- Crude oil range->\$48 to \$58.
- Stocks Resume Advance as Fed Rate Hike Looms: - Global stocks advanced while the dollar was little changed amid optimism that the Federal Reserve's expected rate increase signals confidence that the economy is strengthening. Italian equities and bonds surged on bank recapitalization plans.
- Speculation that fiscal easing in the U.S. will drive growth is pushing investors into stocks as governments take the baton from central banks that are starting to scale back a decade of stimulus. With the market assigning 100 percent odds to a Fed rate hike Wednesday, investors are focusing on the path for 2017, and see a two-in-three chance of additional tightening by June.
- Dollar steadies as pre-Fed nerves dominate: - The dollar steadied against the yen and euro on Tuesday after its weakest day in a week, with markets still uneasy that a Federal Reserve meeting ending on Wednesday may provoke more investors to cash in the greenback's recent gains.
- Oil prices slip on profit taking after rally: - Oil prices slipped lower on Tuesday as investors took profits following a powerful rally that saw prices hit the highest levels since mid-2015 after major producers reached a deal to scale back output.
- Gold slips lower ahead of key Federal Reserve meeting: - Gold prices slipped lower on Tuesday as investors turned their attention to the outcome of the Federal Reserve's two-day meeting on Wednesday as expectations for an interest rate increase continued to weigh on the precious metal.

TRENDS & OUTLOOK – DATE: 14-Dec-2016

PRECIOUS METALS:

COMMDITY (MCX)	S2	S1	PIVOT POINT	R1	R2
GOLD (Feb)	26910	27221	27570	27880	28170
SILVER (Mar)	38500	39900	41400	42600	43786

BASE METALS

COMMDITY (MCX)	S2	S1	PIVOT POINT	R1	R2
COPPER (Feb)	375	381	389	396	405
ZINC (Dec)	176.15	179.50	183.25	187.55	191.50
LEAD (Dec)	150.30	153.25	157.75	162.25	165.90
NICKEL (Dec)	730	745	767	790	815

ENERGY

COMMDITY (MCX)	S2	S1	PIVOT POINT	R1	R2
CRUDE OIL (Dec)	3290	3420	3560	3675	3830
NATURAL GAS (Dec)	221	230	237	245	252

DATA TALKS : TODAY'S ECONOMIC DATA :

BOE Gov Carney Speaks, Core Retail Sales m/m, PPI m/m, Retail Sales m/m, Core PPI m/m, Capacity Utilization Rate, Industrial Production m/m, Business Inventories m/m, Crude Oil Inventories.



LET THE
**WOMAN
POWER RISE**

**WOMEN
DESK**

All the Ladies in the house are
cordially invited to come
& explore their trading talents.

TOLL FREE: 18001030059



Registered Office

Indira House, 3rd Floor, 5 Topiwala Lane,
Opp. Lemington Road Police Station, Grant Road (East), Mumbai - 400007.

Corporate Office

'Ramavat House' E-15, Saket Nagar, Indore - 452018 (M.P.)

Customer Care

Tel: +91-731-4097170/ 71/ 72/ 73/ 74 M. +91 93031 72345

Email: customercare@indiratrade.com www.indiratrade.com



INSTITUTIONAL DEALING UNIT

Africa House, 5, Topiwalla Lane, Lamington Road, Mumbai, 400007

Tel: +91 22 30080678 Fax : +91 22 23870767 Email : ie@indiratrade.com

Disclaimer

This report is for private circulation within the Indira Group. This report is strictly confidential and for information of the selected recipient only and may not be altered in any way, transmitted to, copied or distributed, in part or in whole, to any other person or to the media or reproduced in any form. This report should not be construed as an offer or solicitation to buy or sell any securities or any interest in securities. It does not constitute a personal recommendation or take into account the particular investment objectives, financial situations, or any such factor. The information, opinions estimates and forecasts contained here have been obtained from, or are based upon, sources we believe to be reliable, but no representation of warranty, express or implied, is made by us to their accuracy or completeness. Opinions expressed are our current opinions as of the date appearing on this material only and are subject to change without notice.